

Features

- Corrosive fluid or gas available
- Sensor parts & Fitting parts : Stainless steel 316L
- 2-color digital LCD display
- Copy function
- Programmable pressure unit :
kPa 、 MPa 、 kgf/cm² 、 bar 、 psi 、 inHg
- IP65 enclosure



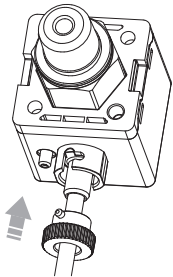
SPECIFICATIONS

TYPE	Compound	Vacuum	Positive	High
MODEL	AP50C	AP50V	AP50P	AP50H
Rated pressure range	-100.0 ~ 100.0 kPa (-14.50 ~ 14.50 psi)	0.0 ~ -101.3 kPa (0.0 ~ -29.9 inHg)	0.000 ~ 1.000 MPa (0.0 ~ 145.0 psi)	0.000 ~ 2.00 MPa (0.0 ~ 290 psi)
Setting pressure range	-101.0 ~ 101.0 kPa (-14.50 ~ 14.50 psi)	10.0 ~ -101.3 kPa (-29.9 inHg ~ 1.45 psi)	-0.100 ~ 1.000 MPa (-14.5 ~ 145.0 psi)	-0.100 ~ 2.00 MPa (-14.5 ~ 290 psi)

FEATURES HIGHLIGHT

1 Quick Installation

- Save installation time.
- Easy removal.



(Removable data cable)

2 Copy Setting

- Avoid setting errors
- Reduce setting time

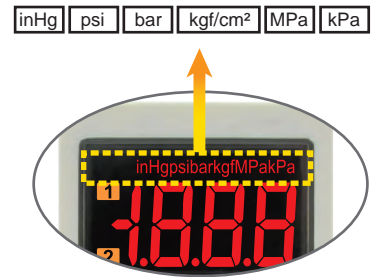


(Original Parameter)

(Copied)

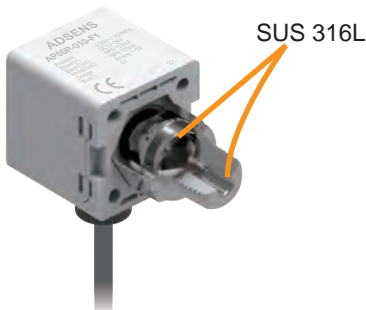
3 Easy Unit Identification

- Conversion unit is on display and easy to read.



4 Applicable for Corrosive Fluid or Gas

- Sensor parts & Fitting parts are SUS 316L, applicable for corrosive fluid or gas equipment.



5 2-Color Display

- User programmable color mode, for different setting conditions.



	5.0	5.0	0.0	1.0
ON	Green	Red	Green	Red
OFF	Red	Green	Green	Red

6 IP65 Compliance

- Protected against water and dust splash from all directions.

