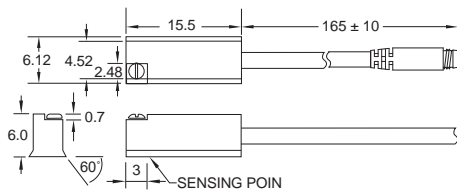
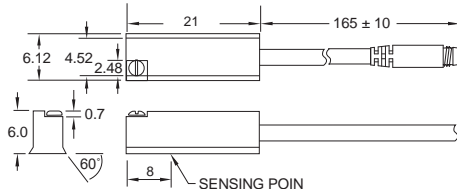


### ■ DIMENSION

CS-30N, CS-30P / CS-30N-QD, CS-30P-QD



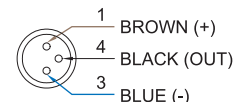
CS-30R / CS-30R-QD



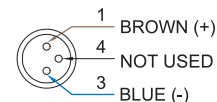
Unit:mm

### ■ QD PINOUT

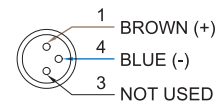
\*3 wire QD wiring



\*2 wire QD wiring



\*2 wire EQD wiring



### ■ SPECIFICATION

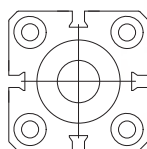
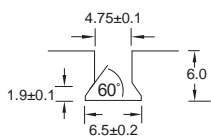
TYPE	CS-30R	CS-30N	CS-30P
CONNECT DIAGRAM			
CHARACTERISTICS			
Wiring Method	2-Wire Type	3-Wire Type	
Switching Logic	SPST, Normally Open	Solid State Output, Normally Open	
Sensor Type	Reed Switch	NPN Current Sinking	PNP Current Sourcing
Operating Voltage	5~120V DC/AC	5~30V DC	
Switching Current	50mA max.	200mA max.	
Contact Rating (*1)	6W max.	6W max.	
Current Consumption	-	17mA @ 24V DC max.	
Voltage Drop	2.5 V max.	0.5 V @ 25mA max.	
Leakage Current	-	0.01 mA max.	
Indicator	Red LED		
Cable	ø2.8, 2C, PUR	ø2.8, 3C, PUR	ø3, 3C, PUR
Operating Frequency	200 Hz	1000 Hz	
Magnet Requirement (*2)	40 Gauss Parallel		
Temperature Range	-10~70°C (+14~158°F)		
Shock (*3)	30G	50G	
Vibration (*4)	9G		
Enclosure Classification	IEC 60529 IP67 (NEMA 6)		
Protection Circuit (*5)	1	3,4	
Set Screw Max. Torque	1.77 in-lbs (0.2 N-m)		

NOTE:

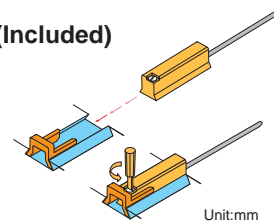
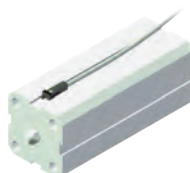
1. WARNING: Never exceed rating (Watt=Voltage x Amperage). Permanent damage to sensor will occur.
2. Measuring standard target: ø15.5Xø8X5t (Anisotropy rubber magnet)
3. Sin wave / X, Y, Z 3 directions / 3 times each direction / 11 ms each time.
4. Double amplitude 1.5 mm / 10Hz~55Hz~10Hz (Sweep 1 min) / X, Y, Z 3 directions / 1 hour each time.
5. 1=None / 2=Short-circuit / 3=Power Source Reverse polarity / 4=Surge Suppression

### ■ GROOVE DIMENSIONS

1/4" dovetail



3/8" dovetail adaptor(Included)



Unit:mm