

CS-1001D



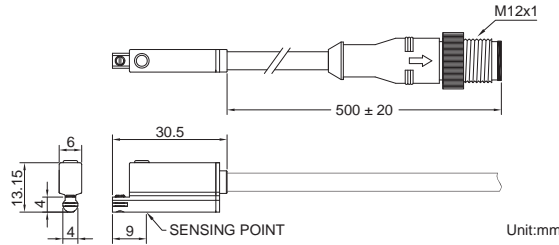
Magnetic Sensor

MAGNETIC FIELD RESISTANT

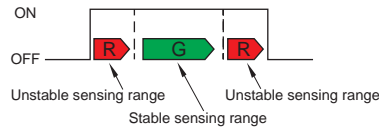


Dual Color LED allow more precise positioning

■ DIMENSIONS

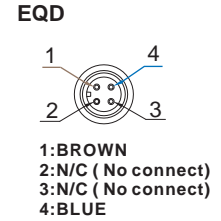
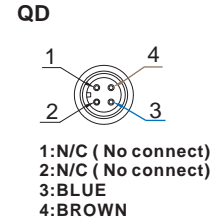


■ SW OUT



The function of three sensing range indicators ensures the preciseness of setting position.

■ QD PINOUT



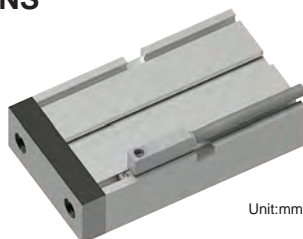
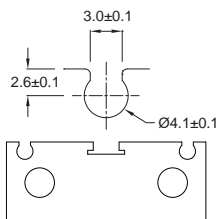
■ SPECIFICATIONS

TYPE	CS-1001D
CONNECT DIAGRAM	
CHARACTERISTICS	
Wiring Method	2-Wire Type
Switching Logic	Solid State Output, Nornally Open
Sensor Type	-
Operating Voltage	10~28V DC
Switching Current	5~50mA max.
Contact Rating (*1)	1.5W max.
Current Consumption	-
Voltage Drop	5V max.
Leakage Current	1mA max.
Indicator	Red LED : unstable sensing range Green LED : stable sensing range
Cable	ø4.8, 2C, PVC
Operating Time	50ms max.
Magnetic Feild Resistance (*2)	16000A
Magnet Requirement (*3)	85 Gauss
Temperature Range	-10~60°C (+14~140°F)
Shock (*4)	50G
Vibration (*5)	9G
Enclosure Classification	IEC 60529 IP67 (NEMA 6)
Protection Circuit (*6)	3,4

NOTE:

1. WARNING: Never exceed rating (Watt=Voltage x Amperage). Permanent damage to sensor will occur.
2. The operational distance can be 0 mm between KT-1000D and welding gun (welding conductor or cable) when the welding current less than 16000 A.
3. Measuring standard target: ø15.5Xø8X5t (Anisotropy rubber magnet)
4. Sin wave / X, Y, Z 3 directions / 3 times each direction / 11 ms each time.
5. Double amplitude 1.5 mm / 10Hz~55Hz~10Hz (Sweep 1 min) / X, Y, Z 3 directions / 1 hour each time.
6. 1=None / 2=Short-circuit / 3=Power Source Reverse polarity / 4=Surge Suppression

■ GROOVE DIMENSIONS



Unit:mm

■ ORDERING INFORMATION

CS-1001D-

Cable Length / Connector

Blank: With 3 meter cable

QD: With M12 4Pin male connector