

CS-65-EX SERIES



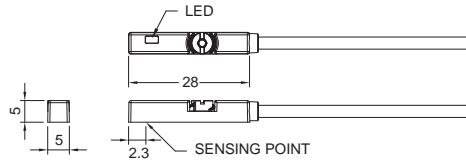
Magnetic Sensor

PATENTED
EXPLOSION PROOF

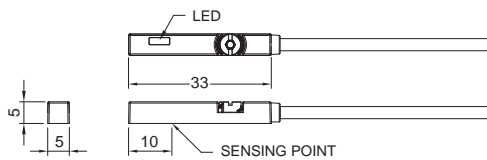


■ DIMENSIONS

CS-65N-EX, CS-65N-NC-EX, CS-65P-EX, CS-65P-NC-EX, CS-65D-EX



CS-65R-EX, CS-65RP-EX



■ M8 Connector option is not available

■ SPECIFICATIONS

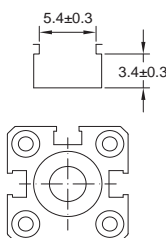
Unit:mm

TYPE	CS-65R-EX	CS-65D-EX	CS-65N-EX	CS-65N-NC-EX	CS-65P-EX	CS-65P-NC-EX	CS-65RP-EX
CONNECT DIAGRAM							
CHARACTERISTICS							
Wiring Method	2-Wire Type			3-Wire Type			
Switching Logic	SPST, Normally Open	Solid State Output, Normally Open	Solid State Output, Normally Close	Solid State Output, Normally Open	Solid State Output, Normally Close	SPST, Normally Open	
Sensor Type	Reed Switch	-	NPN Current Sinking		PNP Current Sourcing		Reed Switch
Operating Voltage	5-30V DC/AC		10-28V DC				10-30V DC/AC
Switching Current	100mA max.	50mA max.	200mA max.		500mA max.		
Contact Rating (*1)	10W max.	1.5W max.	5.5W max.		10W max.		
Current Consumption			10mA @ 24V DC max.				
Voltage Drop	3.0V max.	3.5V max.	1.5V max.				0.1V @ 100mA max.
Leakage Current	-	0.8mA max.	0.05mA max.				-
Indicator	Red LED			Yellow LED			
Cable	ø2.8, 2C, PUR			ø2.8, 3C, PUR			
Operating Frequency	200Hz		1000Hz				200Hz
Magnet Requirement (*2)	65Gauss		50Gauss				65Gauss
Temperature Range	-10~70°C (+14~158°F)						
Shock (*3)	30G		50G				30G
Vibration (*4)	9G						
Enclosure Classification	IEC 60529 IP67 (NEMA 6)						
Protection Circuit (*5)	1	2	2,3,4				1
CE ATEX APPROVAL Baseefa14ATEX0118	Ex II 3GD Ex ic IIB T4 Gc (-10°C ≤ Ta ≤ +70°C) Ex ic IIIC T135°C Dc (-10°C ≤ Ta ≤ +70°C)						

NOTE:

1. WARNING: Never exceed rating (Watt=Voltage x Amperage). Permanent damage to sensor will occur.
2. Measuring standard target: ø15.5xø8x5t (Anisotropy rubber magnet)
3. Sin wave / X, Y, Z 3 directions / 3 times each direction / 11 ms each time.
4. Double amplitude 1.5 mm / 10Hz-55Hz-10Hz (Sweep 1 min) / X, Y, Z 3 directions / 1 hour each time.
5. 1=None / 2=Short-circuit / 3=Power Source Reverse polarity / 4=Surge Suppression

■ GROOVE DIMENSIONS

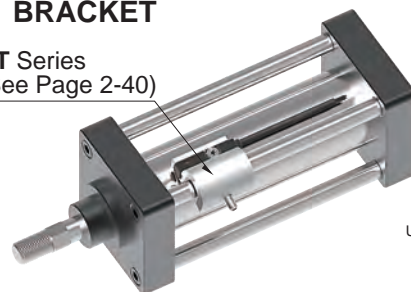


MEMO HOLDER AVAILABLE



■ BRACKET

DT Series
(See Page 2-40)



Unit:mm