



EVS722-21

EVS Series • Top or Bottom • Level Sensor

Features

- External fitting
- Suitable for a wide range of Chemicals
- Repeatability of operation
- Reed switch reliability

Comments

- Stem length 223.5mm
- Two Position Level Switching
- High and Low Level Switch Points
- Brass stem with polypropylene float
- M16 Fitting

Applications

- Waste Water Level
- Sump Level
- Water high or low level
- Coolant level indication
- Boiler heating element protection

EVS722-21

EVS Series • Top or Bottom • Level Sensor

Material

Housing Material	Brass	Cable	Cable Length 3 x 0.5M single insulated
Float Material	Polypropylene		
Contact Material	Ruthenium	Cable Type	18AWG, 16/0.025mm PVC insulated
Float SG	0.68	Cable Colour	Yellow/Blue/Black
Operating Temperature °C	-30 to 80		
Medium	Water		
Housing Colour	Brass		
Float Colour	Charcoal		

Mechanical Specifications

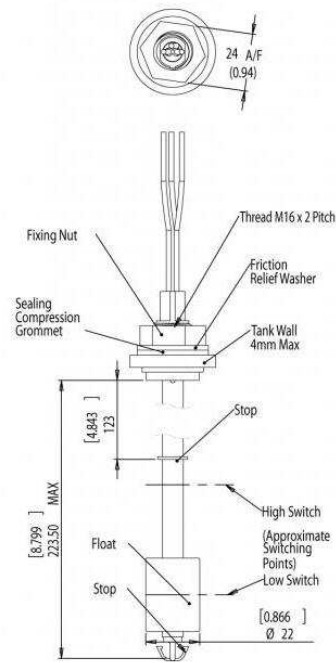
Shock	50g for 11mS duration	Mounting	Thread M16
Vibration	35g up to 500Hz		
Maximum Pressure	4.7 Bar	Mounting	Vertical
Float Diameter	22mm		
IP	IP65		

Switching

Switch Action (Reed Switch)	2 x SPST
Max Switching Voltage VDC	175
Max Switching Voltage VAC	125
Max Switching Current Amps	0.4A DC/0.28A AC
Max Switching Load Watt	5
Operate Mode	Both switches normally closed at bottom stop
Contact Form	A + B

Technical Drawing

EVS Generic M16 External



NORTH AMERICA & EUROPE

MEAS Deutschland GmbH
a TE Connectivity Company
Hauert 13
D-44227 Dortmund
Germany
Phone: +49-(0)231-9740-0
Fax: +49-(0)231-9740-20
Email: info.de@meas-spec.com

ASIA

Measurement Specialties (China), Ltd.,
a TE Connectivity Company
No. 26 Langshan Road
Shenzhen High-Tech Park (North)
Nanshan District, Shenzhen 518057 China
Tel +86 755 3330 5088
Fax +86 755 3330 5099

te.com/sensorsolutions

Measurement Specialties, Inc., a TE Connectivity company.

Measurement Specialties, MEAS, TE Connectivity, TE Connectivity (logo) and EVERY CONNECTION COUNTS are trademarks. All other logos, products and/or company names referred to herein might be trademarks of their respective owners.

The information given herein, including drawings, illustrations and schematics which are intended for illustration purposes only, is believed to be reliable. However, TE Connectivity makes no warranties as to its accuracy or completeness and disclaims any liability in connection with its use. TE Connectivity's obligations shall only be as set forth in TE Connectivity's Standard Terms and Conditions of Sale for this product and in no case will TE Connectivity be liable for any incidental, indirect or consequential damages arising out of the sale, resale, use or misuse of the product. Users of TE Connectivity products should make their own evaluation to determine the suitability of each such product for the specific application.

© 2016 TE Connectivity Ltd. family of companies All Rights Reserved.