

SHV-Series Sliding Hand Valve

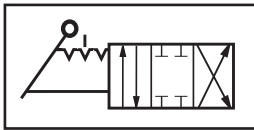
SHV-Series sliding hand valve is a 4-way, 3-position, manual-operated air valve. Recommended for stationary air cylinders, arbor presses, and/or as a throttling valve for positioning air cylinder.

The 90° lever movement provides reliable switching function by the rotary disc. The rotary disc is under consistent spring pressure to provide a leak-proof seal. In center position, inlet is closed to pressure, and the outlet is closed to exhaust. Each position is positively detented and the removable handle prevents unauthorized movement.

Unit should be mounted in a protective position, free from excessive vibration. Use of filtered and lubricated air is highly recommended for maximum valve life and minimum maintenance.



SYMBOL



HOW TO ORDER

SHV —
Sliding Hand Valve **Connection**
 28 = 1/4"
 38 = 3/8"
 48 = 1/2"



California Proposition 65 Warning

WARNING: This product can expose you to chemicals, including lead, which is known to the state of California to cause Cancer, Birth Defects or other reproductive harm. For more information go to www.p65warnings.ca.gov

SPECIFICATIONS

ITEM	MODEL	SHV-28	SHV-38	SHV-48
CONNECTION	NPTF	1/4"-18	3/8"-18	1/2"-14
FLUID		AIR		
VALVE FUNCTION		4-WAY, 3 POSITION		
OPERATION METHOD		ROTARY DISK, DIRECT-ACTING TYPE		
LEVER OPERATING ANGLE		90°(45° EACH DIRECTION)		
CV FACTOR	JIS	2.17	2.17	3.25
PRESSURE RANGE		0 ~ 140 PSI (0 ~ 10.0 kg/cm ²)		
PROOF PRESSURE		213 PSI (15.0 kg/cm ²)		
OPERATING TEMPERATURE		41° ~ 140°F (5° ~ 60°C)		
MATERIAL	BODY	ZINC	ALUMINUM	
	COVER	ZINC		
	ROTARY DISK	TEFLON		
WEIGHT	OZ	21.50	21.50	20.50

DIMENSIONS

