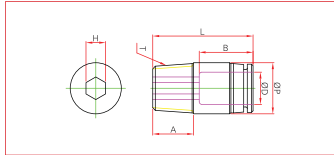


ONE-TOUCH FITTINGS

> METRIC SYSTEM

POC Round male straight

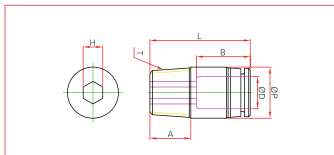


MODEL	ØD	T (Thread)	L	A	B	H	ØP	ORIFICE
POC 04-01	4	PT1/8	20.3	8	15	3	10	3
POC 04-02	4	PT1/4	18.4	10	15	3	10	3
POC 04-03	4	PT3/8	19	11	15	4	10	3
POC 04-M5	4	M5×P0.8	20.1	4	15	2	10	2
POC 04-M6	4	M6×P1.0	20.6	4	15	2.5	10	3
POC 06-01	6	PT1/8	21	8	15	4	12	4
POC 06-02	6	PT1/4	22.8	10	15	4	12	4
POC 06-03	6	PT3/8	20.8	11	15	4	12	4
POC 06-04	6	PT1/2	24.8	14	15	4	12	4
POC 06-M5	6	M5×P0.8	21	4	15	2	12	2
POC 06-M6	6	M6×P1.0	21	4	15	2.5	12	3
POC 08-01	8	PT1/8	25.4	8	18	5	14	5
POC 08-02	8	PT1/4	24.4	10	18	6	14	6
POC 08-03	8	PT3/8	21.4	11	18	6	14	6
POC 08-04	8	PT1/2	25.4	14	18	6	14	6
POC 10-01	10	PT1/8	29.5	8	22	5	17	5
POC 10-02	10	PT1/4	31	10	22	6	17	6
POC 10-03	10	PT3/8	28.5	11	22	8	17	8
POC 10-04	10	PT1/2	26.8	14	22	8	17	8
POC 12-01	12	PT1/8	32	8	22	5	20	5
POC 12-02	12	PT1/4	34	10	22	6	20	6
POC 12-03	12	PT3/8	31	11	22	8	20	8
POC 12-04	12	PT1/2	33.5	14	22	8	20	8
POC 16-03	16	PT3/8	37.8	11	24	8	24	8
POC 16-04	16	PT1/2	39.8	14	24	10	24	10

ONE-TOUCH FITTINGS

> INCH SYSTEM

POC Round male straight



MODEL	ØD	ØP	T (Thread)	L	A	B	H	ORIFICE
POC 5/32-UNF	5/32	11.0	UNF10/32	20.8	3.5	15	3/32	2.4
POC 5/32-N01	5/32	11.0	NPT1/8	21.0	8.5	15	1/8	3.2
POC 5/32-N02	5/32	14.0	NPT1/4	22.0	10.5	15	1/8	3.2
POC 3/16-UNF	3/16	11.0	UNF10/32	22.4	3.5	15	3/32	2.4
POC 3/16-N01	3/16	12.0	NPT1/8	22.7	8.5	15	1/8	3.2
POC 3/16-N02	3/16	14.0	NPT1/4	23.7	10.5	15	1/8	3.2
POC 1/4-UNF	1/4	13.0	UNF10/32	22.9	3.5	15	3/32	2.4
POC 1/4-N01	1/4	13.0	NPT1/8	23.6	8.5	15	3/16	4.8
POC 1/4-N02	1/4	14.0	NPT1/4	23.8	10.5	15	3/16	4.8
POC 5/16-N01	5/16	14.0	NPT1/8	27.5	8.5	18	3/16	4.8
POC 5/16-N02	5/16	14.0	NPT1/4	25.5	10.5	18	1/4	6.4
POC 5/16-N03	5/16	18.0	NPT3/8	25.5	11.5	18	1/4	6.4
POC 3/8-N01	3/8	18.0	NPT1/8	28.2	8.5	22	3/16	4.8
POC 3/8-N02	3/8	18.0	NPT1/4	28.2	10.5	22	1/4	6.4
POC 3/8-N03	3/8	18.0	NPT3/8	28.2	11.5	22	5/16	8.0
POC 3/8-N04	3/8	22.0	NPT1/2	29.2	14.5	22	5/16	8.0
POC 1/2-N02	1/2	21.0	NPT1/4	35.4	10.5	22	1/4	6.4
POC 1/2-N03	1/2	21.0	NPT3/8	32.9	11.5	22	3/8	9.5
POC 1/2-N04	1/2	22.0	NPT1/2	33.0	14.5	22	3/8	9.5