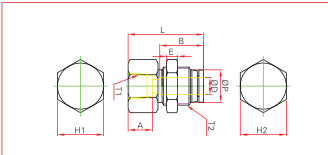


ONE-TOUCH FITTINGS

> METRIC SYSTEM

PMF bulkhead female straight

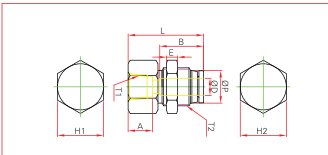


MODEL	ØD	T (Thread)	T2	L	A	H1	H2	B	ORIFICE
PMF 04-01	4	PT1/8	M12×P1.0	23.7	8	14	14	15	2.5
PMF-04-02	4	PT1/4	M12×P1.0	27.0	10	17	14	15	3.0
PMF 06-01	6	PT1/8	M14×P1.0	24.7	8	14	17	15	4.5
PMF 06-02	6	PT1/4	M14×P1.0	27.0	10	17	17	15	4.5
PMF 06-03	6	PT3/8	M14×P1.0	30.8	11	19	17	15	4.5
PMF 08-01	8	PT1/8	M16×P1.0	26.0	8	17	19	18	6.0
PMF 08-02	8	PT1/4	M16×P1.0	29.0	10	17	19	18	6.0
PMF 08-03	8	PT3/8	M16×P1.0	28.8	11	21	19	18	6.5
PMF 08-04	8	PT1/2	M16×P1.0	36.0	14	24	19	18	6.5
PMF 10-01	10	PT1/8	M20×P1.0	30.0	8	21	24	22	7.5
PMF 10-02	10	PT1/4	M20×P1.0	32.6	10	21	24	22	8.0
PMF 10-03	10	PT3/8	M20×P1.0	33.8	11	21	24	22	8.0
PMF 10-04	10	PT1/2	M20×P1.0	38.0	14	24	24	22	8.0
PMF 12-02	12	PT1/4	M22×P1.0	33.6	10	24	27	22	9.0
PMF 12-03	12	PT3/8	M22×P1.0	34.6	11	24	27	22	10
PMF 12-04	12	PT1/2	M22×P1.0	37.0	14	24	27	22	10

ONE-TOUCH FITTINGS

> INCH SYSTEM

PMF bulkhead female straight



MODEL	ØD	ØP	T1	T2	L	E	A	B	H1	H2	ORIFICE
PMF 5/32-N01	5/32	10	NPT1/8	M12×P1.0	27.1	4	8.5	15	9/16	14	3
PMF 3/16-N01	3/16	12	NPT1/8	M12×P1.0	28.3	4	8.5	15	11/16	14	4
PMF 3/16-N02	3/16	12	NPT1/4	M12×P1.0	30.3	4	10.5	15	11/16	14	4
PMF 1/4-N01	1/4	13	NPT1/8	M14×P1.0	30.9	4	8.5	15	11/16	17	5
PMF 1/4-N02	1/4	13	NPT1/4	M14×P1.0	30.9	4	10.5	15	11/16	17	5
PMF 5/16-N01	5/16	14	NPT1/8	M16×P1.0	29.5	5	8.5	18	3/4	19	6
PMF 5/16-N02	5/16	14	NPT1/4	M16×P1.0	31.5	5	10.5	18	3/4	19	6
PMF 5/16-N03	5/16	14	NPT3/8	M16×P1.0	32.5	5	11.5	18	1/8	19	6
PMF 3/8-N02	3/8	17	NPT1/4	M20×P1.0	33.3	5	10.5	20	15/16	24	8
PMF 3/8-N03	3/8	17	NPT3/8	M20×P1.0	34.3	5	11.5	20	15/16	24	8
PMF 1/2-N02	1/2	20	NPT1/4	M22×P1.0	39.0	5	10.5	22	15/16	26	10
PMF 1/2-N03	1/2	20	NPT3/8	M22×P1.0	39.0	5	11.5	22	15/16	26	10
PMF 1/2-N04	1/2	20	NPT1/2	M22×P1.0	41.0	5	14.5	22	15/16	26	10