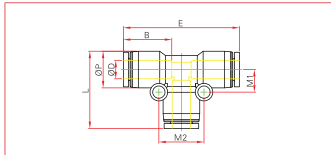


## ONE-TOUCH FITTINGS

> METRIC SYSTEM

### PUT union tee

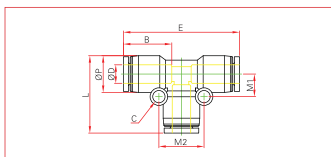


MOD L	ØD	E	L	M1	M2	B	ØP	ORIFICE
PUT 04	4	36.8	24.1	7.2	13.6	15	11	3
PUT 06	6	37.8	25.8	7.8	15.6	15	13	5
PUT 08	8	44.6	29.6	9.1	17.3	18	14.4	6
PUT 10	10	57	37.8	11.8	23.4	22	18.4	8
PUT 12	12	58.6	39.3	14	26.5	22	21	10
PUT 16	16	63.4	44.8	16.5	30.7	24	26	12.5

## ONE-TOUCH FITTINGS

> INCH SYSTEM

### PUT union tee



MODEL	ØD	ØP	E	L	C	B	M1	M2	ORIFICE
PUT 5/32	5/32	11	36.8	24.1	3.2	15	7.2	13.6	3
PUT 3/16	3/16	13	37.8	25.8	3.2	15	7.8	15.6	5
PUT 1/4	1/4	13	37.8	25.8	3.2	15	7.8	15.6	5
PUT 5/16	5/16	14.4	44.6	29.6	3.2	18	8.1	17.3	6
PUT 3/8	3/8	18.4	57	37.8	4.2	22	11.8	23.4	8
PUT 1/2	1/2	21	58.6	39.3	4.2	22	14	26.5	10