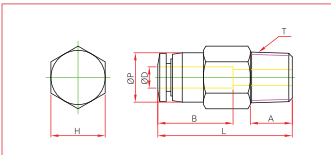


**CHECK VALVES**

>METRIC SYSTEM

**CVPC** straight

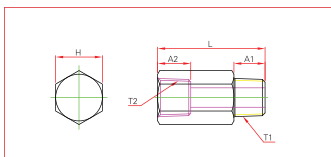


MODEL	ØD	ØP	T	L	A	B	H
CPVC 04M5	4	10	M5XP0.8	31.4	3.6	15.3	10
CPVC 04M6	4	10	M6XP1.0	30.4	4.6	15.3	10
CPVC 0401	4	10	R1/8	27.3	8.0	15.3	10
CPVC 0601	6	11.9	R1/8	32.6	8.0	16.3	12
CPVC 0602	6	11.9	R1/4	32.6	10.0	16.3	14
CPVC 0801	8	14	R1/8	34.9	8.0	18.3	14
CPVC 0802	8	14	1/4	37.2	10.0	18.3	14
CPVC 1003	10	23	R3/8	56.3	11.0	20.3	22
CPVC 1004	10	23	R1/2	58.3	14.0	20.3	22
CPVC 1203	12	25	R3/8	62.3	12.0	23.3	24
CPVC 1204	12	25	R1/2	65.3	14.0	23.3	24

**CHECK VALVES**

>METRIC SYSTEM

**CVPF** bush



MODEL	T1	T2	L	A1	A2	H
CVPF 01-01	R1/8	R1/8	28.1	8	8	12
CVPF 02-02	R1/4	R1/4	34.1	11	11	17
CVPF 03-03	R3/8	R3/8	53.8	12	12	22
CVPF 04-04	R1/2	R1/2	61.0	14	14	24